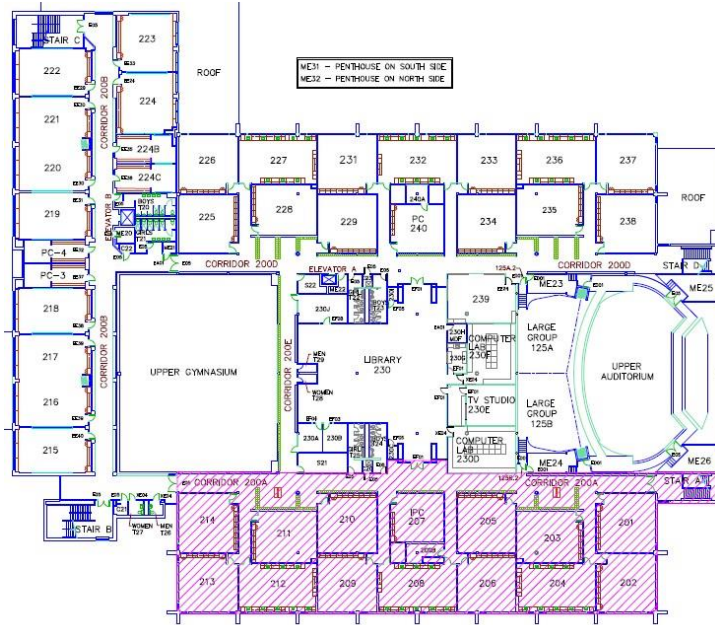


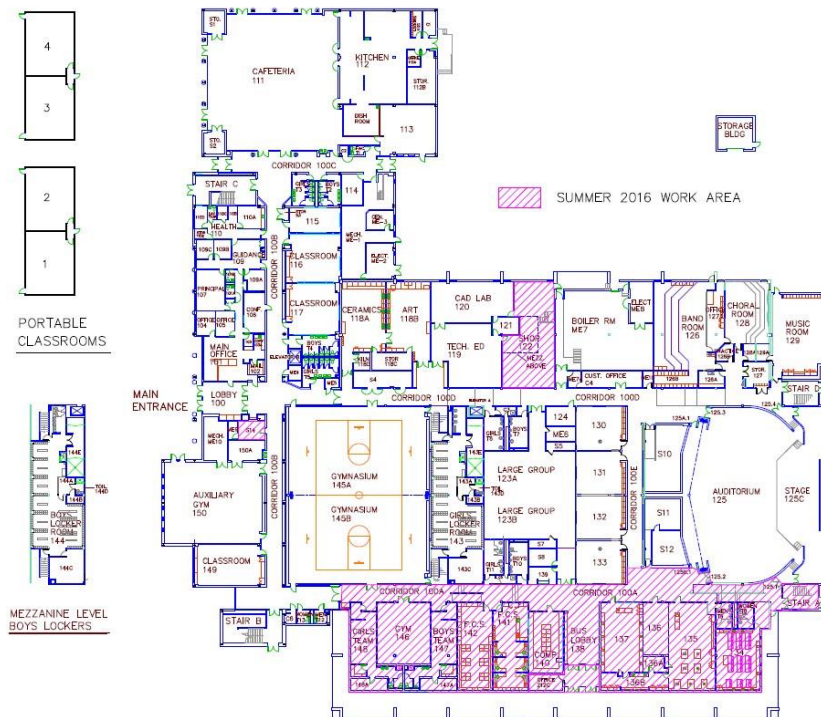
Holicong Middle School Map

The maps below include the 1st & 2nd floor plan during Phase 4 of the renovation. Areas shaded in pink are areas being renovated, and will not be accessible on Schedule Pickup Day (Thursday, August 18th).

Rooms/Areas under renovation: 134-148, 201-214, library, bus platform and bus platform entrance. **Lockers under renovation:** 2715-3002.



HOLICONG MIDDLE SCHOOL
SECOND FLOOR PLAN



HOLICONG MIDDLE SCHOOL
FIRST FLOOR PLAN